

Magnificat in C

Oboe 1

Johann Christian Bach (1735-1782)

Editor: Christopher Boveroux

Allegro

6 *f* *Soli*

10 *f*

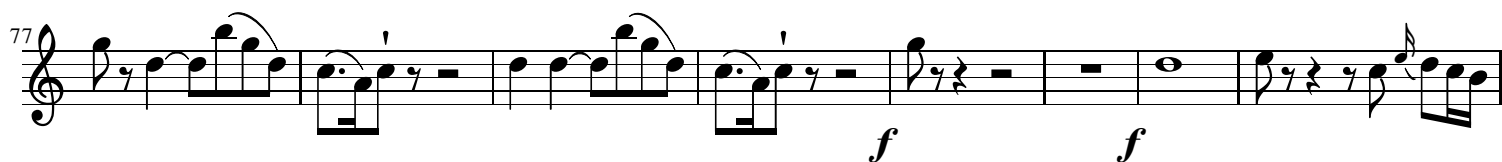
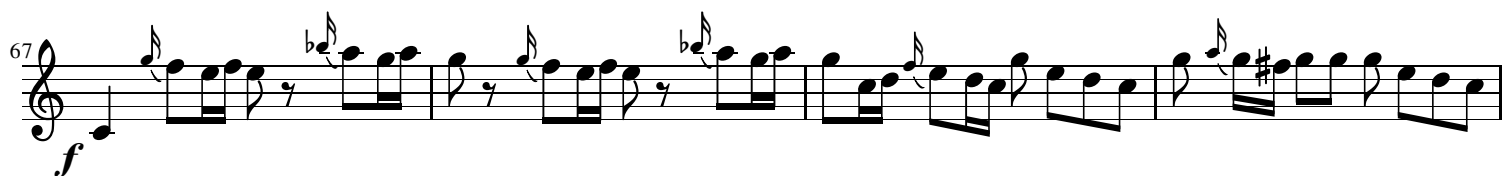
14

21

25

32 *p* *f*

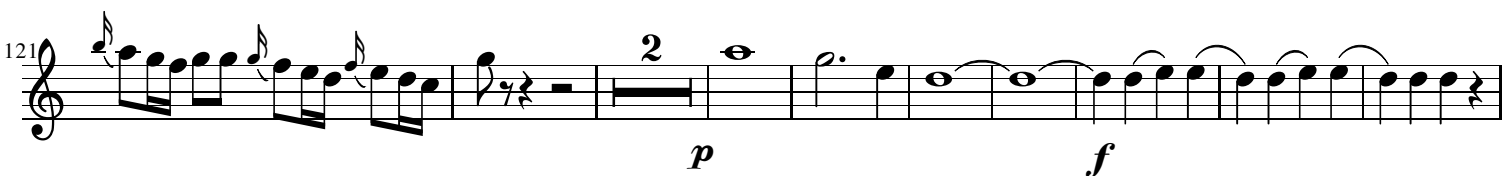
45 *p*

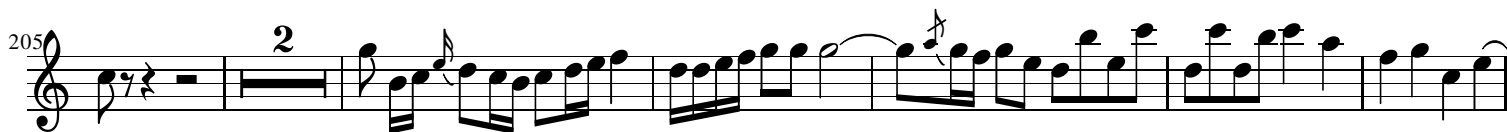
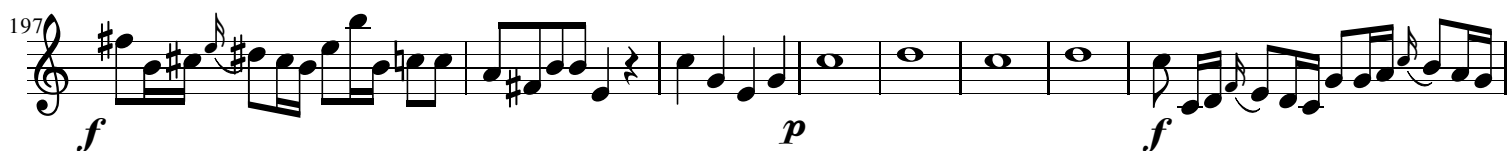
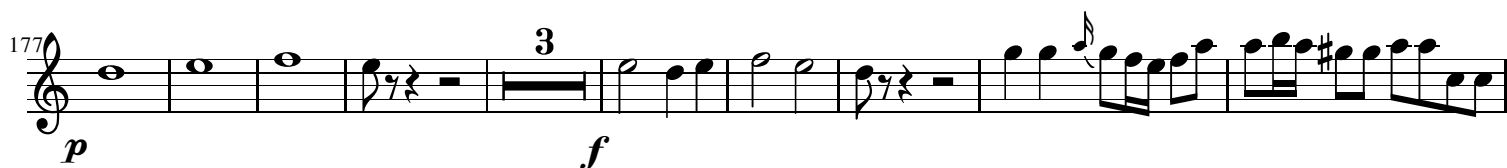
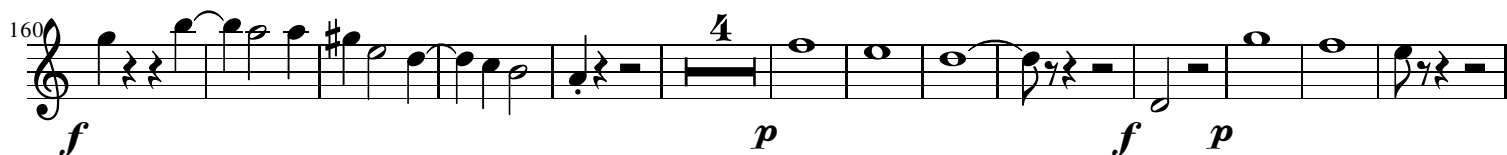
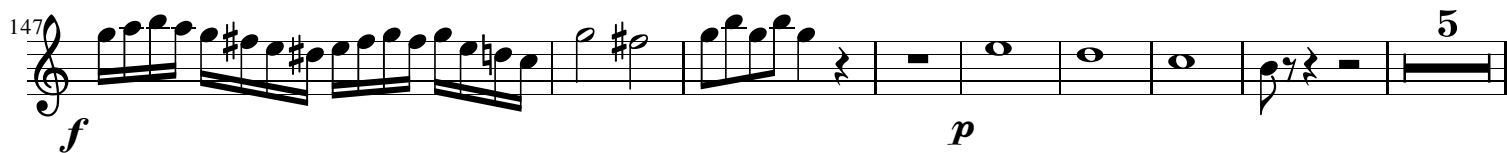


Largo



Allegro





Larghetto



Allegro assai



255



264



270



277



The image displays four staves of musical notation in treble clef. The first staff (measures 255-263) includes a fermata over a whole note in measure 258 and a second ending bracket in measure 263. The second staff (measures 264-269) continues the melodic line with various note values and rests. The third staff (measures 270-276) features a series of eighth and sixteenth notes, ending with a whole note. The fourth staff (measures 277-280) shows a descending melodic line, concluding with a whole note and a double bar line.